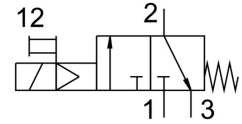


Shut off valve HEE-3/8-D-MIDI-230

Part number: 172943

FESTO



Data sheet

Feature	Value
Type code	HEE
Structural design	Piston gate valve
Actuation type	Electrical
Sealing principle	Soft
Exhaust air function	Without flow control option
Manual override	Detenting
Reset method	Mechanical spring
Type of control	Pilot-controlled
Symbol	00991008
Valve function	3/2, closed, monostable
Operating pressure	2.5 bar ... 16 bar
C value	15.7 l/sbar
b-value	0.33
Standard nominal flow rate	3200 l/min
Duty cycle	100%
Coil characteristics	230 V AC: 50/60 Hz, initial power 5.0 VA, holding power 3.7 VA
Permissible voltage fluctuations	-14 % / +10 %
Operating medium	Compressed air as per ISO 8573-1:2010 [7:4:4] Inert gas
Information on operating and pilot media	Operation with oil lubrication possible (required for further use)
Corrosion resistance class (CRC)	2 - Moderate corrosion stress
Note on materials	RoHS-compliant
Temperature of medium	-10 °C ... 60 °C
Ambient temperature	-10 °C ... 60 °C
CE marking (see declaration of conformity)	As per EU low voltage directive
Type of mounting	Line installation With accessories
Mounting position	Any
Flow direction	Non-reversible
Product weight	500 g
Pneumatic connection 1	G3/8
Pneumatic connection 2	G3/8
Pneumatic connection 3	G1/4
Air quality class at the output	Compressed air as per ISO 8573-1:2010 [7:4:4] Inert gas

Feature	Value
Electrical connection	Form C Plug as per DIN EN 175301-803
Signal status display	With accessories
Seals material	NBR
Housing material	Die-cast aluminum